

# Maritime Initiative

## WHY DO WE HAVE A GSGP REGIONAL MARITIME STRATEGY?

The strategy is designed to double maritime trade, shrink the environmental footprint of the region's transportation network and support the region's industrial core.

**WHAT ARE ITS FOCUS AREAS?** The Governors and Premiers help lead a regional coalition including industry, government and other key partners focused on the following areas:

### Growing Markets

- Cruising
- International

### Advocating Federal Priorities

- Soo Locks
- System Management

### Investing in Infrastructure

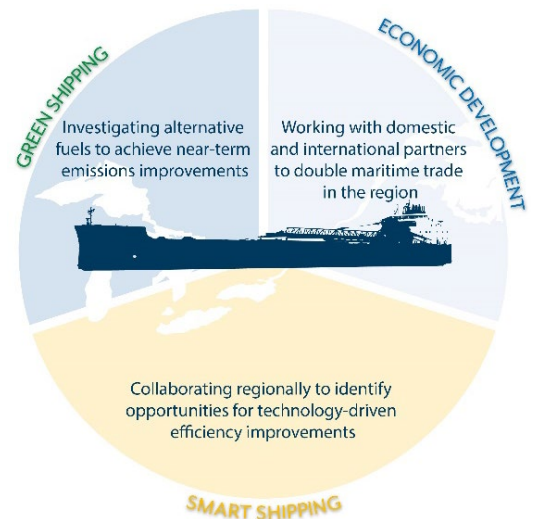
- Federal/State/Provincial/Local
- Private

### Stimulating Innovation

- Smart Ships
- Smart Infrastructure

## WHAT PROGRESS IS BEING MADE WITH THE INITIATIVE?

- Secured Congressional authorization and multi-year federal funding for a new Soo Lock, a linchpin of the regional maritime system
- Fueled growth in regional cruising and successfully attracted new cruise lines to the Great Lakes by launching Cruise the Great Lakes, a regional cruise marketing initiative
- Developed a regional four-port solution for passenger customs clearance
- Built a transatlantic partnership with the Port of Antwerp Bruges in Belgium—a primary gateway port for our region to Western Europe—to increase cargo flows
- Developed an innovative Smart Ships Initiative:
  - Established the [Marine Autonomy Research Site](#), the world's first freshwater smart ships test bed, at Michigan Tech University
  - Launched the [Smart Ships Coalition](#), a broad stakeholder community of academic, government, industry, and international organizations
  - Released a [Smart Ships Action Plan](#) to accomplish long-term goals



**WHY DOES THIS MATTER?** It makes the entire region economically competitive, benefiting everyone. The Great Lakes St. Lawrence maritime transportation system is one of the region's competitive advantages, a backbone of the nearly \$8 trillion regional economy and a key to the region's continuing prosperity. We must continue working together to capitalize on this interconnected, inter-jurisdictional transportation system.

**FOR MORE INFORMATION:** Visit [www.gsgp.org](http://www.gsgp.org).